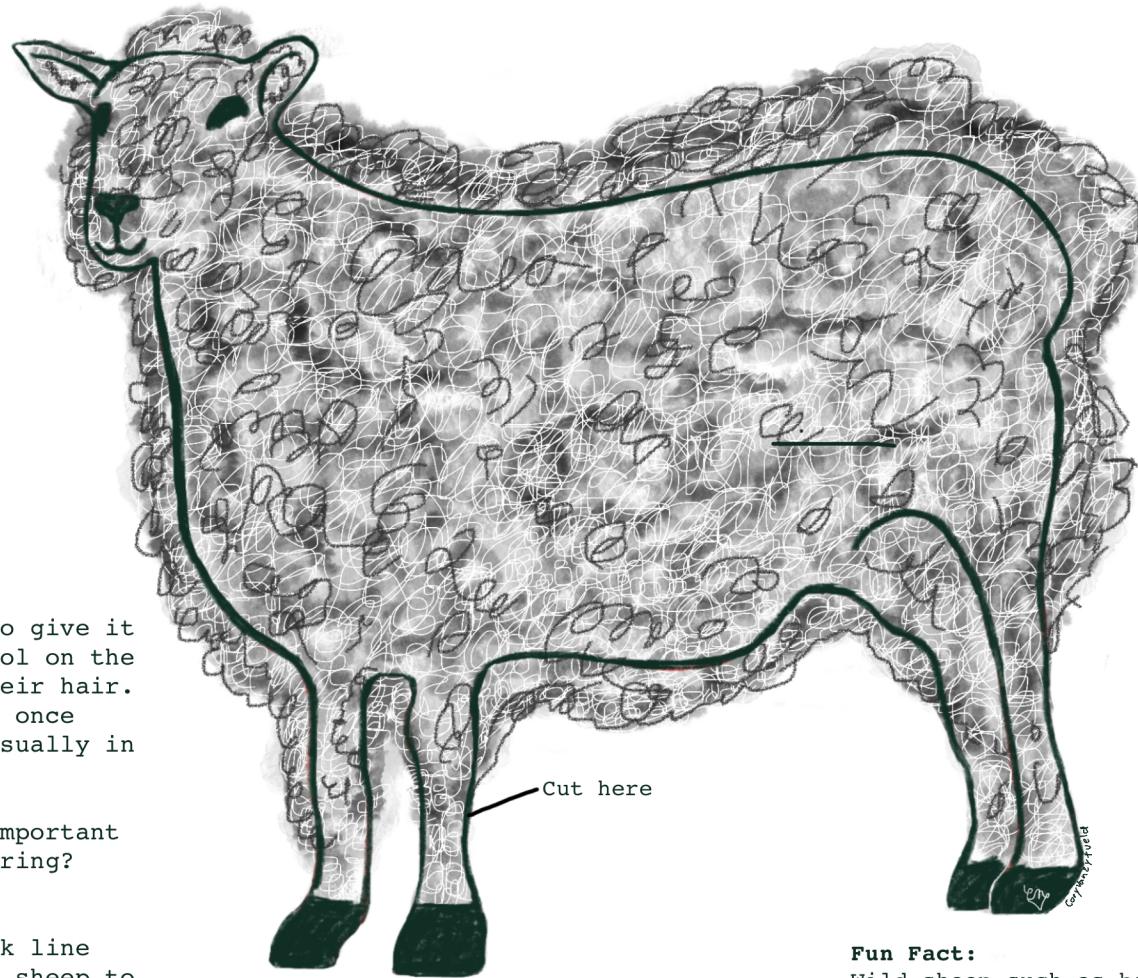


Step 1: Shear your sheep



To shear a sheep means to give it a hair cut. The fuzzy wool on the outside of a sheep is their hair. Sheep are shorn at least once sometimes twice a year usually in the spring.

Why do you think it is important to shear sheep in the spring?

Activity:

Cut along the solid black line along the outside of the sheep to cut off its fluffy wool.

As you cut, imagine you are carefully cutting the soft fuzzy wool from a warm squirming sheep.

Fun Fact:

Wild sheep such as big horn sheep don't need a hair cut. They lose their wool in the spring by scratching their backs on a tree or some other rough object to rub it off. Over history, humans have raised sheep that grow longer wool so that we can use that wool for our own purposes.